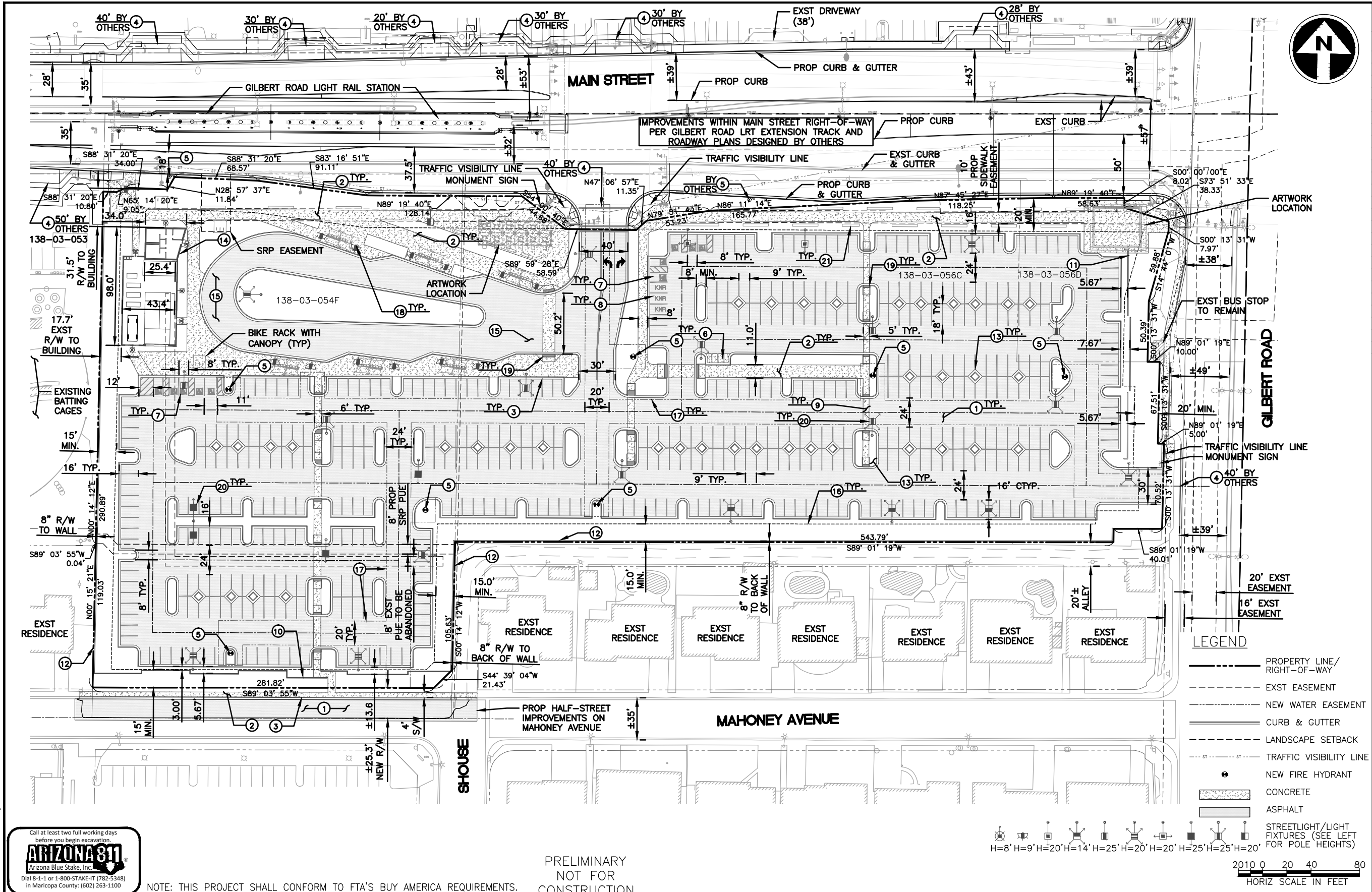


Jacobs is providing engineering design of the Gilbert Road Light Rail Extension Project. The Project is approximately 1.9 miles in length, extending from the Central Mesa Extension (CME) project's eastern extent at Edgemont and Main Street east on Main Street to Gilbert Road. The Project includes center-running light rail track, two passenger stations on Main Street including stations at Stapley Drive and Gilbert Road, a Park and Ride (PNR) facility at Gilbert Road, an Operator's Facility, traction power substations, a signal building, and all ancillary equipment to operate the trains.

At 1859 E. Main Street (SW corner of Main Street and Gilbert Road), a PNR facility is proposed that will accommodate approximately 500 vehicles. The PNR facility also includes a Transit Center with 6 bus bays, an Operator's Facility (for light rail and bus operators to use), a Traction Power Substation (TPSS) that will provide power supply to the trains, a Signal Building, and integrated public art. The proposed building, housing the TPSS, Signal Building and Operator's Facility, is a masonry structure with different access doors for Valley Metro maintenance personnel, bus and train operators.

P:\2015029\Engineering\CADD\Production\Sheets\DRB Sheets\DRB-GRE-PNR Site Plan.dwg
Jun 27, 2016 - 10:25am By: kzoit



KEY NOTES	
ITEM	
1	PROPOSED ASPHALT PAVEMENT
2	PROPOSED CONCRETE SIDEWALK
3	PROPOSED CURB AND GUTTER
4	PROPOSED CONCRETE DRIVEWAY
5	PROPOSED FIRE HYDRANT
6	PROPOSED MOTORCYCLE STALL
7	PROPOSED ADA PARKING STALL
8	PROPOSED KISS-N-RIDE STALL
9	PROPOSED CONCRETE PAVEMENT
10	PROPOSED 3' SCREEN WALL WITH 5' IRON FENCE
11	PROPOSED 3' SCREEN WALL
12	PROPOSED 8' CMU WALL
13	PROPOSED LANDSCAPE ISLAND/DIAMOND
14	PROPOSED OPERATOR'S AND TPSS BUILDING
15	PROPOSED BUS LOOP
16	LANDSCAPING SETBACK
17	PROPOSED 20' WATERLINE EASEMENT
18	PROPOSED BUS CANOPY
19	PROPOSED ADA PEDESTRIAN RAMP
20	PROPOSED STREET LIGHT
21	PROPOSED PRE-CAST BENCH

PARKING STALLS
PROVIDED AUTO STALLS
TOTAL = 491
STANDARD 481
ADA STANDARD STALLS = 8
ADA VAN ACCESSIBLE STALLS = 2
REQUIRED ADA STALLS: 9
REQUIRED ADA VAN ACCESSIBLE STALLS: 9/6 = 1.5
MOTORCYCLE STALLS = 4

SITE ADDRESS
SWC GILBERT RD & MAIN ST
MESA, ARIZONA

SITE ACREAGE
NET AREA = 291,279 ± SF
= 6.69 AC

ZONING
EXISTING: GC/RS-6

MARICOPA COUNTY ASSESSOR PARCEL NUMBER

APN #138-03-054F
APN #138-03-056C
APN #138-03-056D

MARICOPA COUNTY ASSESSOR ADJACENT PARCEL NUMBERS

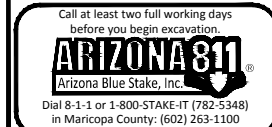
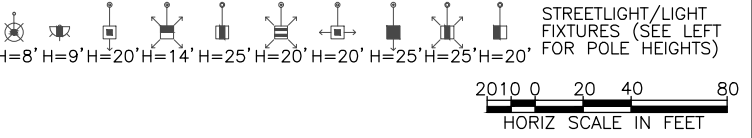
APN #138-03-053
APN #138-03-068B

OWNER
CITY OF MESA
55 N CENTER STREET
MESA, AZ 85201

APPLICANT
VALLEY METRO RAIL
101 N 1st AVE, STE 1300
PHOENIX, AZ 85003
MAIN PH: 602-271-9324
PROJECT MANAGER:
PATRICK FULLER
PH: 602-322-4487
FAX: 602-252-7453

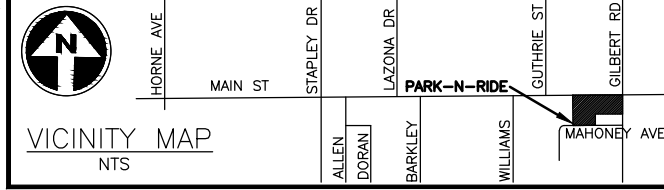
ENGINEER
PREMIER ENGINEERING CORP
6437 W CHANDLER BLVD, STE 1
CHANDLER, AZ 85226
PHONE: (480) 829-6000
FAX: (480) 829-6016

LEGEND	
	PROPERTY LINE/RIGHT-OF-WAY
	EXST EASEMENT
	NEW WATER EASEMENT
	CURB & GUTTER
	LANDSCAPE SETBACK
	TRAFFIC VISIBILITY LINE
	NEW FIRE HYDRANT
	CONCRETE
	ASPHALT
	STREETLIGHT/LIGHT FIXTURES (SEE LEFT FOR POLE HEIGHTS)



NOTE: THIS PROJECT SHALL CONFORM TO FTA'S BUY AMERICA REQUIREMENTS.

PRELIMINARY
NOT FOR
CONSTRUCTION



PREMIER
ENGINEERING CORPORATION
6437 W. CHANDLER BLVD SUITE 1
CHANDLER, AZ 85226 (480) 829-6000

SUBMITTED _____ DATE _____

JACOBS
101 N. 1st AVENUE, #2600, PHOENIX, AZ 85003
T 602.253.1200, F 602.253.1202
WWW.JACOBS.COM

APPROVED _____ DATE _____

DESIGNED BY: KMR
DRAWN BY: KMR
CHECKED BY: KJB
APPROVED BY: KJB
SCALE: 1:40
SUBMITTAL DATE: 27 JUN 16

GILBERT ROAD LRT EXTENSION
VALLEY METRO CONTRACT NO. 14011-GRDS CITY OF MESA PROJECT NO. CP0296

PARK & RIDE FACILITY
GILBERT / MAIN STREET
SITE PLAN

DRAWING NO: GRE-CP-DRB-01
REVISION: -
CITY OF MESA PLAN NO: -
SHEET NO: 1 OF 1

P:\469002 Jacobs_VM Gilbert_Rd_Lit_Rail_Ext\16_CAD\Drawg\TBLK\GRE_B001-DRB.dwg
Jun 27, 2016 10:19am By:Color
Jah

BUILDING FINISHES KEYNOTES

KEYED NOTES	
1	CONCRETE PAD
2	GARBAGE TOTES
3	GROUND FAVE CMU - 1
4	SPLIT FACE CMU - 1
5	SPLIT FACE CMU - 2
6	FREE-AIR LOUVERS
7	STOREFRONT SYSTEM
8	STOREFRONT INTEGRAL SUNSHADE
9	STEEL BEAMS
10	8" CMU WALL



1 TPSS NORTH ELEVATION
1/8" = 1'-0"



2 TPSS WEST ELEVATION
1/8" = 1'-0"

Call at least two full working days before you begin excavation.

ARIZONA 811
Arizona Blue Stake, Inc.
Dial 8-1-1 or 1-800-STAKE-IT (782-5348)
in Maricopa County: (602) 263-1100

NOTE: THIS PROJECT MUST CONFORM TO FTA'S BUY AMERICA REQUIREMENTS.

PRELIMINARY
NOT FOR
CONSTRUCTION

**wendel**

464 South Farmer Avenue, Suite 101, Tempe, AZ 85281
www.wendelcompanies.com p:877.293.6335

Wendel WID Architecture, Engineering, Surveying and Landscape Architecture P.C.



JACOBS

101 N. 1st AVENUE, #2600, PHOENIX, AZ 85003
T 602.253.1200, F 602.253.1202
WWW.JACOBS.COM

APPROVED _____ DATE _____

**VALLEY
METRO**

DESIGNED BY: _____

DRAWN BY: _____

CHECKED BY: _____

APPROVED BY: _____

SCALE: _____ AS NOTED

SUBMITTAL DATE: 27 JUN 16

GILBERT ROAD LRT EXTENSION
VALLEY METRO CONTRACT NO. 14011-GRDS CITY OF MESA PROJECT NO. CP0296

**GILBERT TPSS - GILBERT ROAD
TRACTION POWER SUBSTATION
ELEVATIONS**

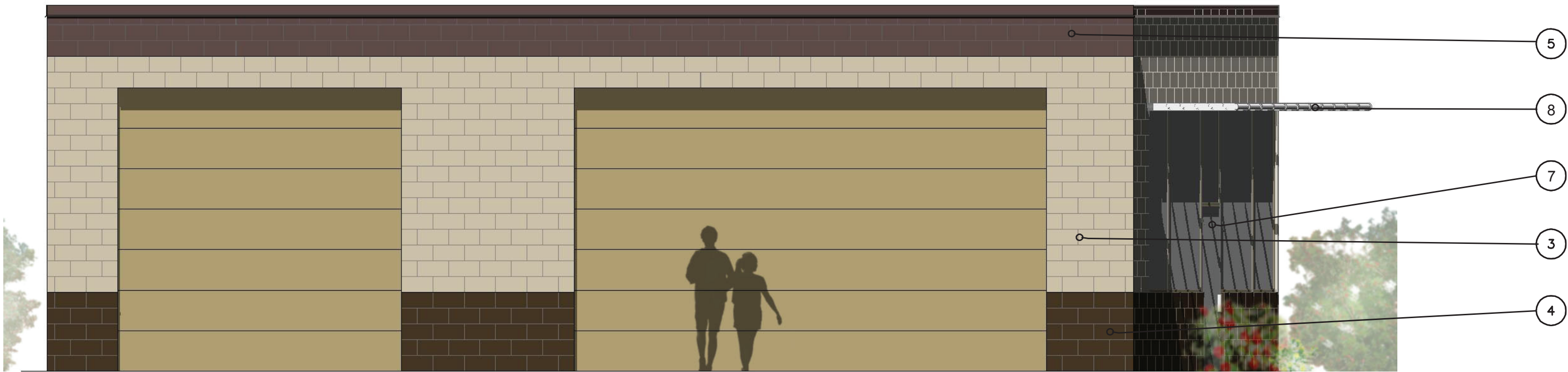
DRAWING NO: GRE-AE-DRB-76

REVISION: _____

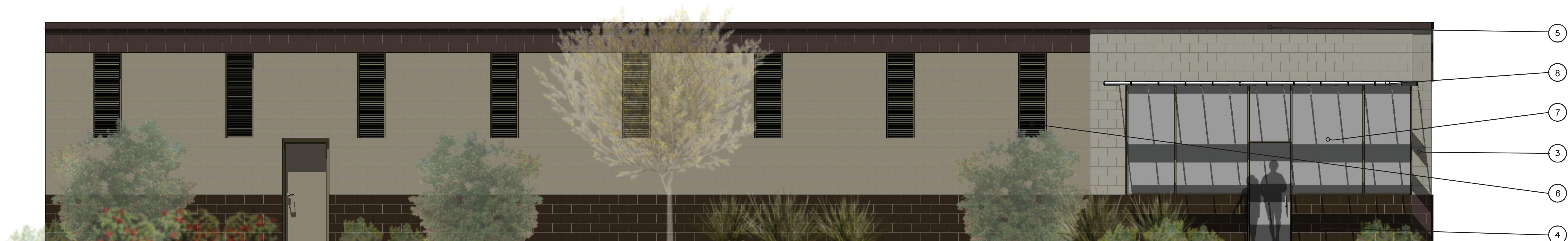
CITY OF MESA PLAN NO: _____

SHEET NO: _____

P:\469002 Jacobs_VM Gilbert_Rd_Lit_Rail_Ext\16_CAD\Drawings\TBK\GRE_B001-DRB.dwg
Jun 27, 2016 10:19am By:Color



1 **TPSS SOUTH ELEVATION**
1/8" = 1'-0"



2 **TPSS EAST ELEVATION**
1/8" = 1'-0"

BUILDING FINISHES KEYNOTES

KEYED NOTES	
1	CONCRETE PAD
2	GARBAGE TOTES
3	GROUND FAVE CMU - 1
4	SPLIT FACE CMU - 1
5	SPLIT FACE CMU - 2
6	FREE-AIR LOUVERS
7	STOREFRONT SYSTEM
8	STOREFRONT INTEGRAL SUNSHADE
9	STEEL BEAMS
10	8" CMU WALL

Call at least two full working days before you begin excavation.

ARIZONA 811
Arizona Blue Stake, Inc.
Dial 8-1-1 or 1-800-STAKE-IT (782-5348)
in Maricopa County: (602) 263-1100

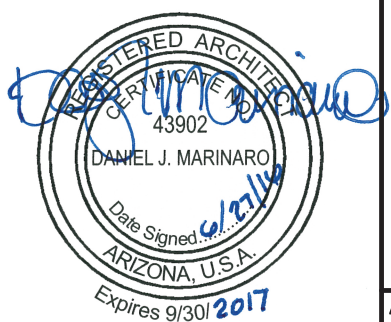
NOTE: THIS PROJECT MUST CONFORM TO FTA'S BUY AMERICA REQUIREMENTS.

PRELIMINARY
NOT FOR
CONSTRUCTION



464 South Farmer Avenue, Suite 101, Tempe, AZ 85281
www.wendelcompanies.com p:877.293.6335
Wendel WID Architecture, Engineering, Surveying and Landscape Architecture P.C.

SUBMITTED DATE



101 N. 1st AVENUE, #2600, PHOENIX, AZ 85003
T 602.253.1200, F 602.253.1202
WWW.JACOBS.COM

APPROVED DATE

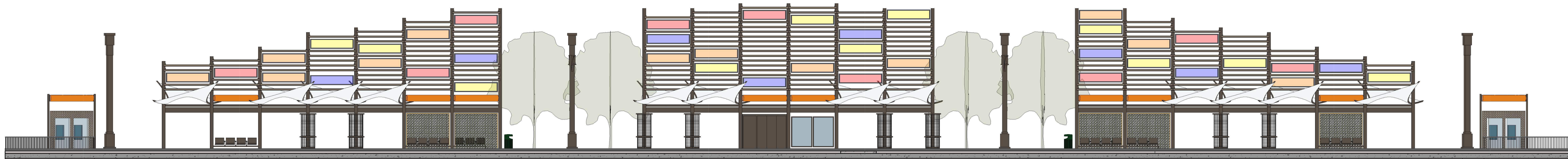


DESIGNED BY:
DRAWN BY:
CHECKED BY:
APPROVED BY:
SCALE: AS NOTED
SUBMITTAL DATE: 27 JUN 16

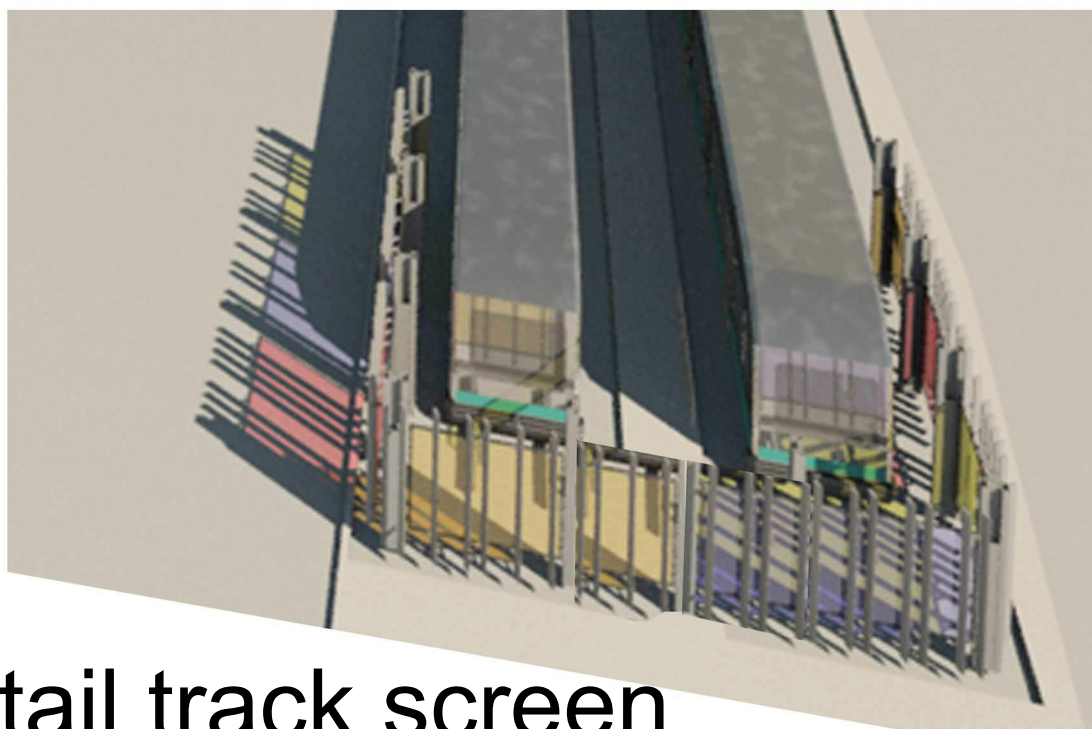
GILBERT ROAD LRT EXTENSION
VALLEY METRO CONTRACT NO. 14011-GRDS CITY OF MESA PROJECT NO. CP0296

**GILBERT TPSS - GILBERT ROAD
TRACTION POWER SUBSTATION
ELEVATIONS**

DRAWING NO: GRE-AE-DRB-77
REVISION:
CITY OF MESA PLAN NO:
SHEET NO: _____



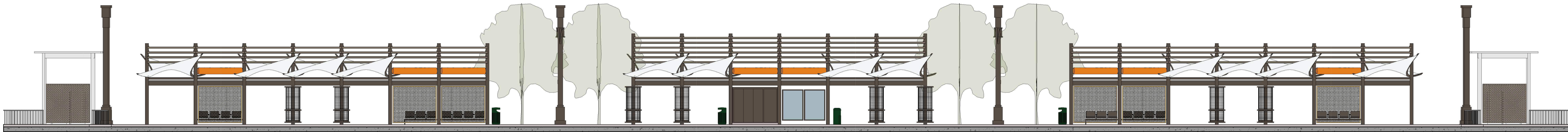
GILBERT ROAD STATION- SOUTH ELEVATION



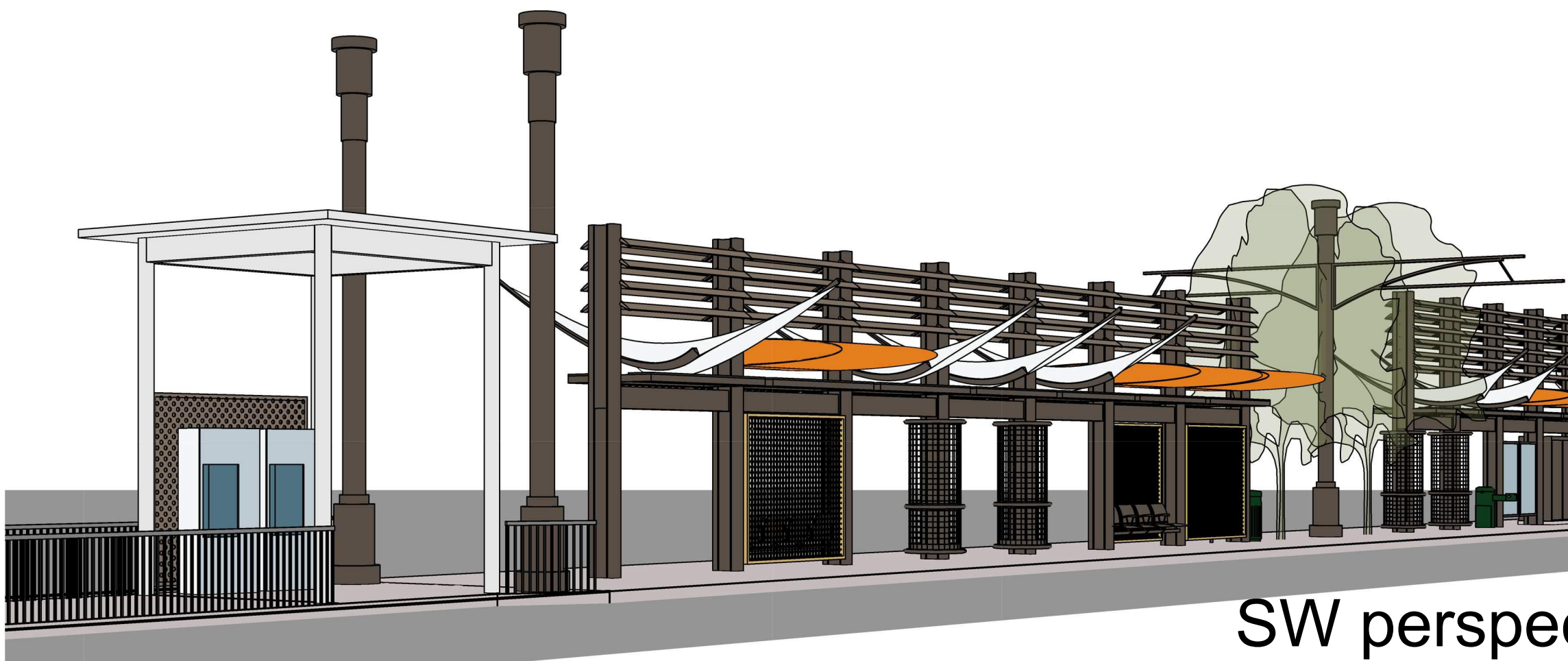
tail track screen



NW perspective



STAPLEY DRIVE STATION- SOUTH ELEVATION




SW perspective



NOTE: THIS PROJECT MUST CONFORM TO FTA'S BUY AMERICA REQUIREMENTS.

PRELIMINARY
NOT FOR
CONSTRUCTION

REV	DATE	BY	DESCRIPTION
A	10/30/15	-	30% SUBMITTAL
B	04/18/16	-	60% SUBMITTAL
C	06/27/16	-	DRB APPLICATION




464 South Farmer Avenue, Suite 101, Tempe, AZ 85281
www.wendelcompanies.com p 877.293.6335
Wendel WD Architecture, Engineering, Surveying and Landscape Architecture P.C.

SUBMITTED

DATE





101 N. 1st AVENUE, #2600, PHOENIX, AZ 85003
T 602.253.1200, F 602.253.1202
WWW.JACOBS.COM

APPROVED

DATE



VALLEY
METRO

DESIGNED BY:
DRAWN BY:
CHECKED BY:
APPROVED BY:
SCALE: AS NOTED
SUBMITTAL DATE: 27 JUN 16

GILBERT ROAD LRT EXTENSION
VALLEY METRO CONTRACT NO. 14011-GRDS CITY OF MESA PROJECT NO. CP0296

STATION ELEVATIONS

DRAWING NO: GRE-AP-DRB-74
REVISION:
CITY OF MESA PLAN NO:
SHEET NO:

P:\469002 Jacobs_WM Gilbert Rd Lt Rail Ext\16. CAD\Drawg\TBK\GRE_B001-DRB.dwg
Jun 27, 2016 - 10:19am ByColor
joh


Call at least two full working days before you begin excavation.

ARIZONA811
Arizona Blue Stake, Inc.
Dial 8-1-1 or 1-800-STAKE-IT (782-5348)
in Maricopa County: (602) 263-1100

NOTE: THIS PROJECT MUST CONFORM TO FTA'S BUY AMERICA REQUIREMENTS.

PRELIMINARY
NOT FOR
CONSTRUCTION

REV	REVISIONS		
	DATE	BY	DESCRIPTION
A	10/30/15	-	30% SUBMITTAL
B	04/18/16	-	60% SUBMITTAL
C	06/27/16	-	DRB APPLICATION



464 South Farmer Avenue, Suite 101, Tempe, AZ 85281
www.wendelcompanies.com p 877.293.6335
Wendel WD Architecture, Engineering, Surveying and Landscape Architecture P.C.

SUBMITTEDDATE

REGISTERED ARCHITECT
DANIEL J. MARINARO
43802
State of Arizona
Expires 9/30/2017

JACOBS
101 N. 1st AVENUE, #2600, PHOENIX, AZ 85003
T 602.253.1200, F 602.253.1202
WWW.JACOBS.COM

APPROVEDDATE



**VALLEY
METRO**

DESIGNED BY:
DRAWN BY:
CHECKED BY:
APPROVED BY:
SCALE: AS NOTED
SUBMITTAL DATE: 27 JUN 16

GILBERT ROAD LRT EXTENSION
VALLEY METRO CONTRACT NO. 14011-GRDS CITY OF MESA PROJECT NO. CP0296

PROJECT COLOR BOARD

DRAWING NO: GRE-AP-DRB-73
REVISION:
CITY OF MESA PLAN NO:
SHEET NO:



TPSS coping & anodized
aluminum



TPSS ground face
accent

TPSS ground face
field

TPSS split face base



station steel paint



station blue frp



station orange frp



station red frp



station yellow frp

C:\Users\cliff\appdata\local\Temp\AcPublish_8448\GRE_ELO4-ALUX.dwg
cliff Jun 27, 2016 - 11:04am ByColor

Call at least two full working days before you begin excavation.

ARIZONA 811
Arizona Blue Stake, Inc.

Dial 8-1-1 or 1-800-STAKE-IT (782-5348) in Maricopa County: (602) 263-1100

NOTE: THIS PROJECT MUST CONFORM TO FTA'S BUY AMERICA REQUIREMENTS.

REV	REVISIONS		
	DATE	BY	DESCRIPTION

WRIGHT
engineering corporation

ELECTRICAL ENGINEERING AND DESIGN
165 EAST CHILTON DRIVE • CHANDLER, ARIZONA 85225
PHONE 480.497.5829 • FAX 480.497.5807
www.wrightengr.com Project # 15217

SUBMITTED DATE

PRELIMINARY
NOT FOR
CONSTRUCTION

57159
CLIFFORD M. TOLMAN
Signed: *Clifford M. Tolman*
Expires 3-31-17

APPROVED DATE

JACOBS

101 N. 1st AVENUE, #2600, PHOENIX, AZ 85003
T 602.253.1200, F 602.253.1202
WWW.JACOBS.COM

APPROVED DATE

VALLEY METRO

DESIGNED BY:
Z. USEVITCH

DRAWN BY:
Z. USEVITCH

CHECKED BY:
C. TOLMAN

APPROVED BY:
C. TOLMAN

SCALE:
AS NOTED

SUBMITTAL DATE:
27 JUN 2016

GILBERT ROAD LRT EXTENSION
VALLEY METRO CONTRACT NO. 14011-GRDS CITY OF MESA PROJECT NO. CP0296

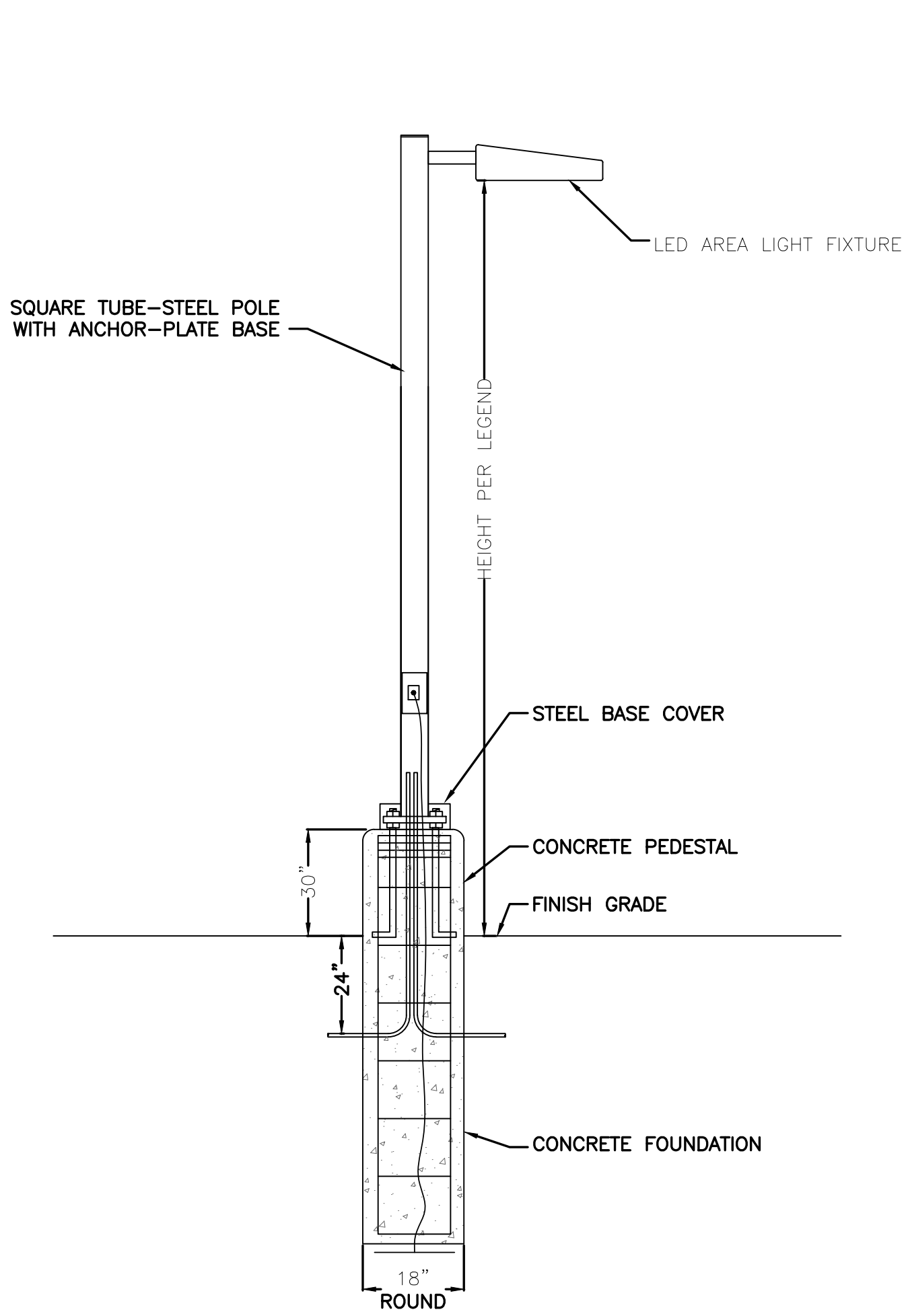
LIGHTING DETAILS
AND
SPECIFICATION SHEETS

DRAWING NO:
GRE-PH-DRB-03

REVISION:
—

CITY OF MESA PLAN NO:
—

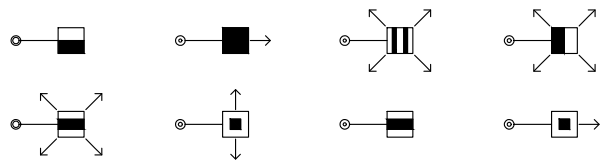
SHEET NO:
1 OF 1



AREA LIGHT DETAIL

NO SCALE

THIS DETAIL APPLIES TO THE FOLLOWING SYMBOLS ON THE SITE PLAN:



McGraw-Edison

DESCRIPTION
The Galleon™ LED luminaire delivers exceptional performance in a highly scalable, low-profile design. Patented, high-efficiency AccuLED Optics™ system provides uniform and energy conscious illumination to walkways, parking lots, roadways, building areas and security lighting applications. IP66 rated and UL/cUL Listed for wet locations.

SPECIFICATION FEATURES
Construction
Extruded aluminum driver enclosure thermally isolated from Light Squares for optimal thermal performance. Heavy-wall, die-cast aluminum end caps enclose housing and die-cast aluminum heat sinks. A unique, patent pending interlocking housing and heat sink provides scalability with superior structural rigidity. 3G vibration tested. Optional tool-less hardware available for ease of entry into electrical chamber. Housing is IP66 rated.
Optics
Patented, high-efficiency injection-molded AccuLED Optics technology. Optics are precisely designed to shape the distribution maximizing efficiency and application spacing. AccuLED Optics create consistent distributions with the scalability to meet customized application requirements. Offered standard in 4000K (+/- 275K) CCT 70 CRI. Optional 6000K CCT and 3000K CCT.
Electrical
LED drivers are mounted to removable tray assembly for ease of maintenance. 120-277V 50/60Hz, 347V 60Hz or 480V 60Hz operation. 480V is compatible for use with 480V Wye systems only. Standard with 0-10V dimming. Shipped standard with Eaton proprietary circuit module designed to withstand 10kV of transient line surge. The Galleon LED luminaire is suitable for operation in -40°C to 40°C ambient environments. For applications with ambient temperatures exceeding 40°C, specify the HA (High Ambient) option. Light Squares are IP66 rated. Greater than 90% lumen maintenance expected at 60,000 hours. Available in standard 1A drive current and optional 530mA and 700mA drive currents.
Mounting
STANDARD ARM MOUNT:
Extruded aluminum arm includes internal bolt guides allowing for easy positioning of fixture during assembly. When mounting two or more luminaires at 90° and 120° apart, the EA extended arm may be required. Refer to the arm mounting requirement table.
Round pole adapter included.
For wall mounting, specify wall mount bracket option. QUICK MOUNT ARM: Arm is bolted directly to the pole and the fixture slides onto the quick mount arm and is secured via a single fastener, facilitating quick and easy installation. The versatile, patent pending, quick mount arm accommodates multiple drill patterns ranging from 1-1/2" to 4-7/8". Removal of the door on the quick mount arm enables wiring of the fixture without having to access the driver compartment. A knock-out enables round pole mounting.
Finish
Housing finished in super durable TGIC polyester powder coat paint, 2.5 mil nominal thickness for superior protection against fade and wear. Heat sink is powder coated black. Standard colors include black, bronze, grey, white, dark platinum and graphite metallic. RAL and custom color matches available.
Warranty
Five-year warranty.

CATALOG #
Project
Comments
Prepared by
Type
Date

GLEON GALLEON LED
1-10 Light Squares
Solid State LED
AREA/SITE LUMINAIRE

CERTIFICATION DATA
UL/cUL Wet Location Listed
ISO 9001
LM79 / LM80 Compliant
3G Vibration Rated
IP66 Rated
DesignLights Consortium™ Qualified*

ENERGY DATA
Electronic LED Driver
≥0.9 Power Factor
≤20% Total Harmonic Distortion
120V-277V 50/60Hz
347V & 480V 60Hz
-40°C Min. Temperature
40°C Max. Temperature
50°C Max. Temperature (HA Option)

ISO TD500020EN 2016-01-29 10:56:52

DIMENSIONS

DRILLING PATTERN

DIMENSION DATA

Number of Light Squares	"A" Width Standard Arm Length	"B" Standard Arm Length	"B" Optional Arm Length	Weight with Arm (lbs.)	EPA with Arm 2 (Sq. Ft.)
1-4	15-1/2" (384mm)	7" (178mm)	10" (254mm)	33 (15.0 kgs.)	0.86
5-6	21-5/8" (549mm)	7" (178mm)	10" (254mm)	44 (20.0 kgs.)	1.00
7-8	27-5/8" (702mm)	7" (178mm)	10" (254mm)	56 (24.5 kgs.)	1.07
9-10	33-3/4" (857mm)	7" (178mm)	10" (254mm)	63 (28.6 kgs.)	1.12

NOTES: 1. Optional arm length to be used when mounting two fixtures at 90° on a single pole. 2. EPA calculated with optional arm length.

ARM MOUNTING REQUIREMENTS

Configuration	90° Apart	120° Apart
GLEON-AE-01	7" Arm (Standard)	7" Arm (Standard)
GLEON-AE-02	7" Arm (Standard)	7" Arm (Standard)
GLEON-AE-03	7" Arm (Standard)	7" Arm (Standard)
GLEON-AE-04	7" Arm (Standard)	7" Arm (Standard)
GLEON-AE-05	10" Extended Arm (Required)	7" Arm (Standard)
GLEON-AE-06	10" Extended Arm (Required)	7" Arm (Standard)
GLEON-AE-07	13" Extended Arm (Required)	13" Extended Arm (Required)
GLEON-AE-08	13" Extended Arm (Required)	13" Extended Arm (Required)
GLEON-AE-09	16" Extended Arm (Required)	16" Extended Arm (Required)
GLEON-AE-10	16" Extended Arm (Required)	16" Extended Arm (Required)

STANDARD WALL MOUNT

MAST ARM MOUNT

QUICK MOUNT ARM (INCLUDES FIXTURE ADAPTER)

QM Quick Mount Arm (Standard)

QMEA Quick Mount Arm (Extended)

QUICK MOUNT ARM DATA

Number of Light Squares 1,2	"A" Width	Weight with QM Arm (lbs.)	Weight with QMEA Arm (lbs.)	EPA (Sq. Ft.)
1-4	15-1/2" (384mm)	35 (15.91 kgs.)	38 (17.27 kgs.)	1.11
5-6	21-5/8" (549mm)	46 (20.91 kgs.)	49 (22.27 kgs.)	
7-8	27-5/8" (702mm)	56 (25.45 kgs.)	59 (26.82 kgs.)	

NOTES: 1 QM option available with 1-8 light square configurations. 2 QMEA option available with 1-8 light square configurations. 3 QMEA arm to be used when mounting two fixtures at 90° on a single pole.

Eaton 1201 Highway 78 South Peachtree City, GA 30089 P: 770-486-4800 www.eaton.com/lighting Specifications and dimensions subject to change without notice. TD500020EN 2016-01-29 10:56:52

C:\Users\cliff\appdata\local\Temp\AcPublish_8448\GRE_ELO4-ALUX.dwg
cliff Jun 27, 2016 - 11:04am ByColor

Call at least two full working days before you begin excavation.

ARIZONA811

Arizona Blue Stake, Inc.

Dial 8-1-1 or 1-800-STAKE-IT (782-5348) in Maricopa County: (602) 263-1100

NOTE: THIS PROJECT MUST CONFORM TO FTA'S BUY AMERICA REQUIREMENTS.

PRELIMINARY
NOT FOR
CONSTRUCTION

REV	REVISIONS		
	DATE	BY	DESCRIPTION

WRIGHT

engineering corporation

ELECTRICAL ENGINEERING AND DESIGN
165 EAST CHILTON DRIVE • CHANDLER, ARIZONA 85225
PHONE 480.497.5829 • FAX 480.497.5807
www.wrightengr.com Project # 15217

SUBMITTED

DATE

Professional Engineer
57159
CLIFFORD M.
TOLMAN
Signed: 6-27-16
Cliff M. Tolman
Expires 3-31-17

JACOBS

101 N. 1st AVENUE, #2600, PHOENIX, AZ 85003
T 602.253.1200, F 602.253.1202
WWW.JACOBS.COM

APPROVED

DATE

VALLEY METRO

DESIGNED BY: Z. USEVITCH
DRAWN BY: Z. USEVITCH
CHECKED BY: C. TOLMAN
APPROVED BY: C. TOLMAN
SCALE: AS NOTED
SUBMITTAL DATE: 27 JUN 2016

GILBERT ROAD LRT EXTENSION
VALLEY METRO CONTRACT NO. 14011-GRDS CITY OF MESA PROJECT NO. CP0296

LIGHTING DETAILS
AND
SPECIFICATION SHEETS

DRAWING NO: GRE-PH-DRB-04
REVISION: —
CITY OF MESA PLAN NO: —
SHEET NO: 1 OF 1

DESCRIPTION

The Galleon™ wall and pedestrian LED luminaire's appearance is complementary with the Galleon area and site luminaire bringing a modern architectural style to lighting applications. Flexible mounting options accommodate wall surfaces, pole, and mast arm applications allowing it to be offered as a pedestrian or site lighting, solution. The Galleon family of LED products deliver exceptional performance with patented, high-efficiency AccuLED Optics™, providing uniform and energy conscious lighting for parking lots, building and security lighting applications.

McGraw-Edison

Catalog #	Type
Project	
Comments	
Prepared by	

SPECIFICATION FEATURES

Construction
Driver enclosure thermally isolated from optics for optimal thermal performance. Heavy wall aluminum housing die-cast with integral external heat sinks to provide superior structural rigidity and an IP66 rated housing. Overall construction passes a 1.5G vibration test to ensure mechanical integrity.

Optics
Choice of thirteen patented, high-efficiency AccuLED Optics. The optics are precisely designed to shape the distribution maximizing efficiency and application spacing. AccuLED Optics create consistent distributions with the scalability to meet customized application requirements. Offered standard in 4000K (± 275K) CCT and minimum 70 CRI. Optional 6000K and 3000K CCT. Greater than 90% lumen

Electrical
LED drivers are mounted for ease of maintenance. 120-277V 50/60Hz, 347V or 480V 60Hz operation. 480V is compatible for use with 480V Wye systems only. Drivers are provided standard with 0-10V dimming. An optional Eaton proprietary surge protection module is available and designed to withstand 10kV of transient line surge. The Galleon Wall LED luminaire is suitable for operation in -30°C to 40°C ambient environments. For applications with ambient temperatures exceeding 40°C, specify the HA (High Ambient) option.

Warranty
Five-year warranty.

Mounting
In addition to wall mounting, the innovative quick mounting arm attaches to new or existing 4-5" round or square poles with 1-1/2" to 4-7/8" drilling patterns without re-drilling. Optional mast arm adapter fits horizontal 2-3/8" tenon.

Finish
Housing finished in super durable TGIC polyester powder coat paint, 2.5 mil nominal thickness for superior protection against fade and wear. Standard colors include black, bronze, grey, white, dark platinum and graphite metallic. RAL and custom color matches available. Consult the McGraw-Edison Architectural Colors brochure for the complete selection.

Warranty
Five-year warranty.

GWC GALLEON WALL AND PEDESTRIAN LUMINAIRE

1-2 Light Squares
Solid State LED

WALL AND POLE MOUNT LUMINAIRE

DIMENSIONS
15-11/16" (400mm) 6-1/2" (164mm) 12-1/8" (308mm) 19-15/16" (507mm) 22-1/2" (572mm) 4-15/16" (125mm) 3-3/4" (98mm) 1-1/4" (32mm) 4-7/8" (124mm) 1-1/8" (43mm) 11/16" (14mm) 2-1/2" (63mm) 9-13/64" (159mm)

BATTERY BACKUP AND THRU-WIRE BACKBOX

HOOK-N-LOCK MOUNTING

QUICK MOUNT ARM (OVERALL DIMENSIONS)

QUICK MOUNT ARM (POLE MOUNTING DETAILS)

CERTIFICATION DATA
UL/cUL Listed
LM79 / LM80 Compliant
IP66 Housing
ISO 9001
DesignLights Consortium™ Qualified*

ENERGY DATA
Electronic LED Driver
≥0.9 Power Factor
≤20% Total Harmonic Distortion
120-277V/50 & 60Hz, 347V/60Hz, 480V/60Hz
-30°C Minimum Temperature
40°C Ambient Temperature Rating

SHIPPING DATA
Approximate Net Weight:
27 lbs. (12.2 kgs.)

FATON
Powering Business Worldwide

TD014017EN
2016-04-19 06:52:08

*www.designlights.org

DESCRIPTION

The Impact Elite family of wall luminaires is the ideal complement to site design. Incorporating modular LightBAR™ technology, the Impact Elite luminaire provides outstanding uniformity and energy-conscious illumination. Combined with a rugged construction, the Impact Elite luminaire is the ideal facade and security luminaire for zones surrounding schools, office complexes, apartments and recreational facilities. UL/cUL listed for wet locations.

McGraw-Edison

Catalog #	Type
Project	
Comments	
Prepared by	

SPECIFICATION FEATURES

Construction
Heavy-wall, die-cast aluminum housing and removable hinged door frame for precise tolerance control and repeatability. Hinged door inset for clean mating with housing surface and secured via two captive fasteners. Optional tamper-resistant Torx™ head fasteners offer vandal resistant access to the electrical chamber.

Electrical
LED drivers mount to die-cast aluminum back housing for optimal heat sinking, operation efficacy, and prolonged life. Standard drivers feature electronic universal voltage (120-277V 50/60Hz), 347V 60Hz or 480V 60Hz operation, greater than 0.9 power factor, less than 20% harmonic distortion, and are suitable for operation in -40°C to 40°C ambient environments. All fixtures are shipped standard with 10kV/10kA common – and differential – mode surge protection. LightBARs feature an IP66 enclosure rating and maintain greater than 95% lumen maintenance at 60,000 hours per IESNA TM-21. Emergency egress options for -20°C ambient environments and occupancy sensor available.

Mounting
Gasketed and zinc plated rigid steel mounting attachment fits directly to 4" j-box or wall with the Impact Elite "Hook-N-Lock" mechanism for quick installation. Secured with two captive corrosion resistant black oxide coated allen head set screws concealed but accessible from bottom of fixture.

Finish
Cast components finished in a five-stage super TGIC polyester powder coat paint, 2.5 mil nominal thickness for superior protection against fade and wear. Standard colors include black, bronze, grey, white, dark platinum and graphite metallic. RAL and custom color matches available. Consult the McGraw-Edison Architectural Colors brochure for the complete selection.

Warranty
Five-year warranty.

ISC/ISS/IST/ISW IMPACT ELITE LED

1 - 2 LightBARs
Solid State LED

WALL MOUNT LUMINAIRE

DIMENSIONS
Cylinder 18" (457mm) 7" (178mm) 9" (229mm) Quarter Sphere 18" (457mm) 9" (228mm) Wedge 16-1/2" (419mm) 8" (203mm) 8-1/4" (210mm) Trapezoid 16-1/2" (419mm) 7" (178mm) 9" (228mm)

HOOK-N-LOCK MOUNTING

CERTIFICATION DATA
UL/cUL Listed
LM79 / LM80 Compliant
IP66 LightBARs
ISO 9001
DesignLights Consortium™ Qualified*

ENERGY DATA
Electronic LED Driver
≥0.9 Power Factor
≤20% Total Harmonic Distortion
120-277V/50 & 60Hz, 347V/60Hz, 480V/60Hz
-40°C Minimum Temperature
40°C Ambient Temperature Rating

SHIPPING DATA
Approximate Net Weight:
18 lbs. (8 kgs.)

FATON
Powering Business Worldwide

TD014003EN
2015-06-03 10:00:36

*www.designlights.org